

Safety doors

> Doors that matter.



Your specialist for tailor-made solutions



Design & Construction

- > Over 70 years of experience in the field of door and gate construction
- > 3D CAD constructions
- > Individual and customer-specific solutions



Manufacturing

- > Production in the in-house fabrication on a surface of over 17,300 m²
- > Own production hall for stainless steel doors and gates
- > Two painting cabins with drying plant



Electrical engineering

- > Pioneering component technology
- > High quality standards made possible by our own control and switchboard construction
- > Adaptation to individual customer request



Project Management

- > Administrative coordination
- > Support during acceptance tests
- > Delivery, installation and commissioning by our own assembly teams



Service & Maintenance

- > Specialised staff for specified inspection and maintenance
- > If necessary, rapid support by our highly qualified service staff
- > Extensive vehicle fleet

Our expertise, ensuring your safety



Fire
protection



Smoke
protection



Burglary-
resistant



Explosion
protection



Bullet-
resistant



Radiation
protection



Flood
protection



Sound
protection



Earthquake
protection



Blast-
resistant



Air
permeability



HPEM
protection

Our certifications

DIN EN ISO 3834-2

- > Extensive quality requirements for fusion welding of metallic materials

DIN EN ISO 9001

- > Quality management

Seal of quality „Safety with system“

- > Occupational safety management system

DIN EN 1090-1

- > Load-bearing steel components up to EXC-4 according to EN 1090-2

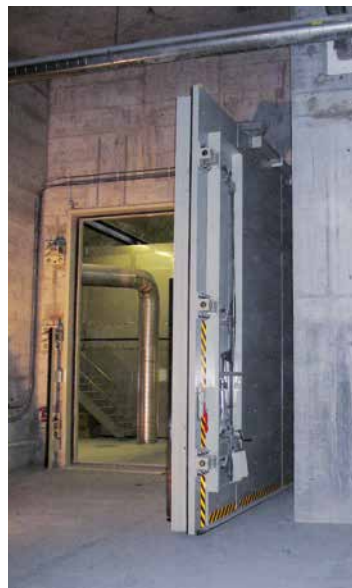
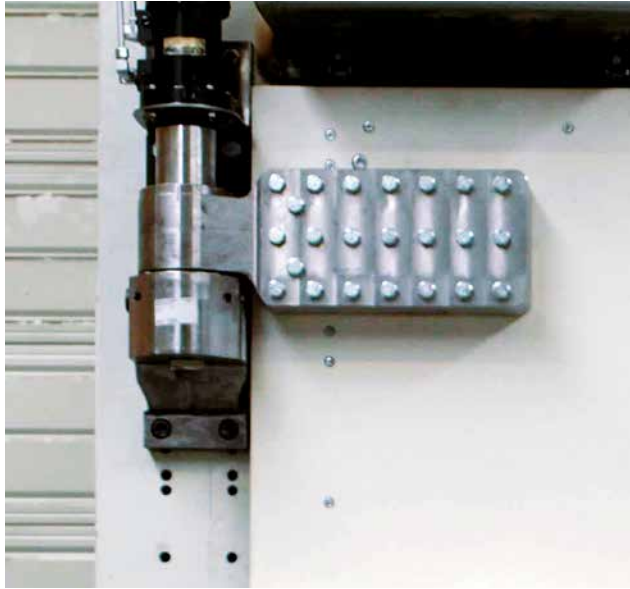


Our references

> Safety doors

4





Product overview

> Safety doors

6

		Radiation protection door (1-/2-leaf)	Massive radiation protection door (1-/2-leaf)
Design	Dimensions (CW) max. width x height	1-leaf 1.500 x 3.000 ⁽¹⁾ 2-leaf 3.000 x 3.000 ⁽¹⁾	1-leaf 1.500 x 2.500 ⁽¹⁾ 2-leaf 3.000 x 2.500 ⁽¹⁾
	Door leaf thickness	69	69, 150, 450, 750 ⁽²⁾
	Material	steel, high-density polyethylene, lead ⁽²⁾	steel, high-density polyethylene, lead ⁽²⁾
	Surface	primed and painted acc. to RAL	primed and painted acc. to RAL (decontaminable coating)
	Opening angle	90° up to 180°	90° up to 130°
	Glazing	●	-
	Wicket door / subdivided active leaf	-	-
	Threshold	●	●
	Fittings	stainless steel fitting	special locking with swivel lever
	Types of drive	manual / possible with drive	manual (single & double leaf), electromechanical (only single leaf), hydraulic drive unit (only single leaf)
	Control	-	yes (contactor control) / on request PLC possible
Performance characteristics	Radiation resistance	X-radiation / gamma radiation / scattered radiation acc. to DIN 6834	neutron radiation / gamma radiation
	Burglary resistance EN 1627	-	-
	Bullet resistance EN 1522	-	-
	Sound protection ISO 717-1	up to 54 dB	up to 35 dB
	Fire protection EN 13501-2	up to EI ₂ 120-S ₂₀₀	up to EI ₂ 120-S ₂₀₀
	Air tightness	V < 0,5 m³/hm at ΔP 1000 Pa	V < 0,5 m³/hm at ΔP 1000 Pa
	Resistance against the ingress of water	-	-

● possible / - not possible

CW = Civil works dimension

All dimensions in mm

Massive radiation sliding door (1-/2-leaf)	Protection door against electromagnetic radiation (1-/2-leaf)	Safety door (1-/2-leaf)
1-leaf 1.500 x 2.500 ⁽¹⁾ 2-leaf 3.000 x 2.500 ⁽¹⁾	1-leaf 1.500 x 3.000 ⁽¹⁾ 2-leaf 3.000 x 3.000 ⁽¹⁾	1-leaf 1.500 x 3.000 ⁽¹⁾ 2-leaf 3.000 x 3.000 ⁽¹⁾
69, 150, 450, 750 ⁽²⁾	150	69
steel, high-density polyethylene, lead ⁽²⁾	steel / stainless steel	steel / stainless steel
primed and painted acc. to RAL (decontaminable coating)	primed and painted acc. to RAL	primed and painted acc. to RAL
opening to the right- or to the left-hand side	90° up to 180°	90° up to 180°
-	-	●
on request	-	-
●	●	-
locking by the drive system	special locking with swivel lever	security fitting
manual or electromechanical	manual	manual/possible with drive
HPS-Motion controller (PCB) SPS-Control (PLC)	-	-
neutron radiation / gamma radiation	HPEM up to 90 dB ⁽³⁾ (frequency range 100 MHz - 3 GHz)	-
-	up to RC-4	up to RC-6
-	up to FB 6 NS	up to FB 6 NS
up to 35 dB	up to 40 dB	up to 40 dB
up to EI ₂ 120-S ₂₀₀	up to EI ₂ 120-S ₂₀₀	up to EI ₂ 120-S ₂₀₀
V < 0,5 m ³ /hm at ΔP 1000 Pa	V < 0,5 m ³ /hm at ΔP 1000 Pa	-
-	3,0 m ³ /hm leakage at 9 m water column	-

⁽¹⁾ Oversized dimensions on request⁽²⁾ Depending on the radiation resistance requirement⁽³⁾ HPEM = High-Power-Electro-Magnetic (electromagnetic radiation)



Fire protection doors and gates

Smoke protection doors



Water protection doors

Sound insulating doors

Burglary resistant doors

Bullet resistant doors



Multipurpose doors

Multipurpose sliding doors

Folding gates

Tunnel doors



Facility protection gates

Prison cell doors

Conveyor closures

Liftable gates